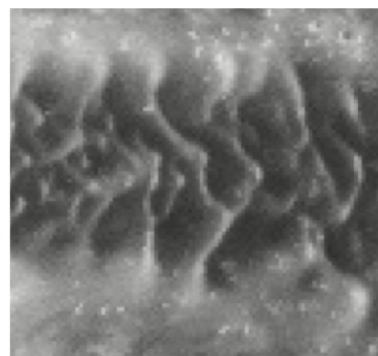
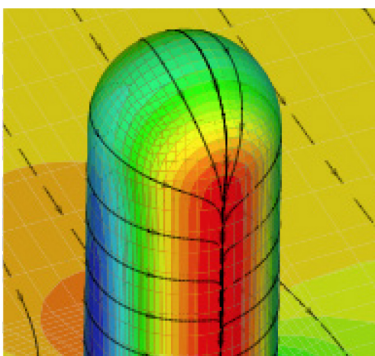
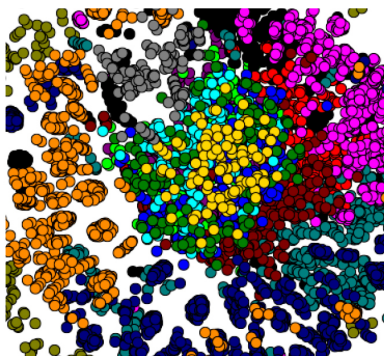
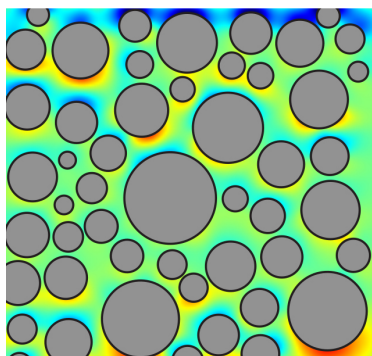


DEPARTMENT OF MATHEMATICS

FLORIDA STATE UNIVERSITY



SIR JAMES LIGHTHILL POSTDOCTORAL SCHOLAR

The purpose of the program is to provide multi-year support for early career development of recent recipients of the Ph.D. in mathematics or a closely related field. The Sir James Lighthill Postdoctoral Scholars have the diversity and depth of skills required to contribute significant advances in multidisciplinary research in mathematics, computing, and applications in science and engineering. For details on how to apply visit math.fsu.edu

Research activities range from Pure Mathematics including Analysis, Geometry, Topology, and Probability
Computational Mathematics: including Fundamental Numerical Methods for Differential and Integral Equations,
Stochastic Computation and Optimization | Applications of Mathematics: including Geometric and Topological Data
Analysis, Fluid Dynamics, Aeroacoustics, Biomathematics, and Financial Mathematics.



FLORIDA STATE UNIVERSITY